

From Multi-Line, three decades of building trust.
Through competitive pricing and quality.

RCS

ALUCOBEST

**Aluminum Composite Cladding
and
Metal Composite Cladding**

 **Multi-Line**

TRUST TECHNOLOGY

RCS Mall
Gapan Nueva Ecija

Features

- Excellent torsion strength
- Even coating and various colors
- Excellent weather resistance
- Easy processing and installation
- Excellent impact resistance
- Outstanding fireproofing characteristics (Class A2 & B1)
- Easy to maintain

Specifications

- **Colors:** 30 standard colors, also available in custom colors with minimum quantity.
- **Applications:** wall curtain, parapet and fascia, columns and canopies, advertising plates, interior walls, decorative fins
- **Standard dimension:** 1220mm x 2440mm x 3mm, 1220mm x 2440mm x 4mm
- **Optimal thickness:** 2mm, 5mm, 6mm
- **Available aluminum skin thicknesses:**
Polyester - 3mm: 0.12, 0.15, 0.18, 0.21mm •
4mm: 0.21, 0.30, 0.40, 0.50mm
PVDF - 3mm: 0.21mm • 4mm: 0.21, 0.30, 0.40, 0.50mm
- **Special sizes:** maximum width 2000mm, maximum length 6m
- **Finishes:** polyester, PVDF, polyester NANO, PVDF NANO
- **Special products available:** 2 stripped colors in one panel, panels with fluted inner core

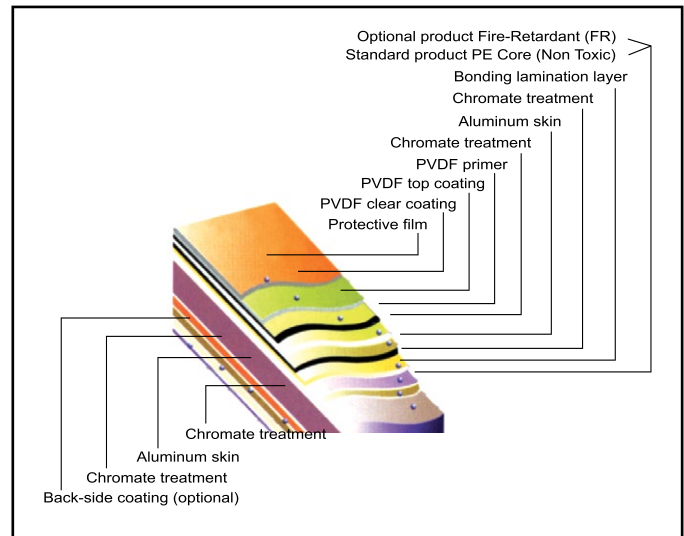
Polyester (PE) Coating

- Achieves Bright Colors and High Gloss
- Commonly used for Interior Applications, Signage and Digital print

PVDF Coating

- Most durable of all paint Finishes
- With 2-3 coats of paint applied during production
- Ideal for external wall cladding including commercial and residential Facades, Soffits and curtain walls.
- With 15 years warranty

Layer Composition



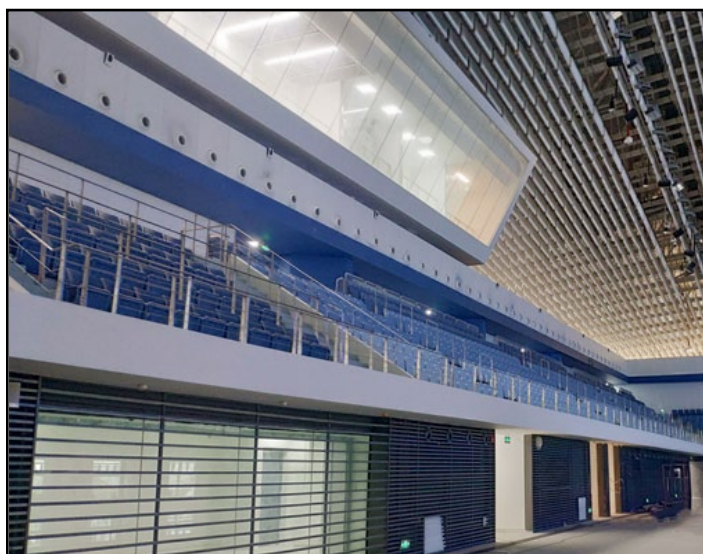
2014 BCI Asia's Architects' Choice Awards Certificate



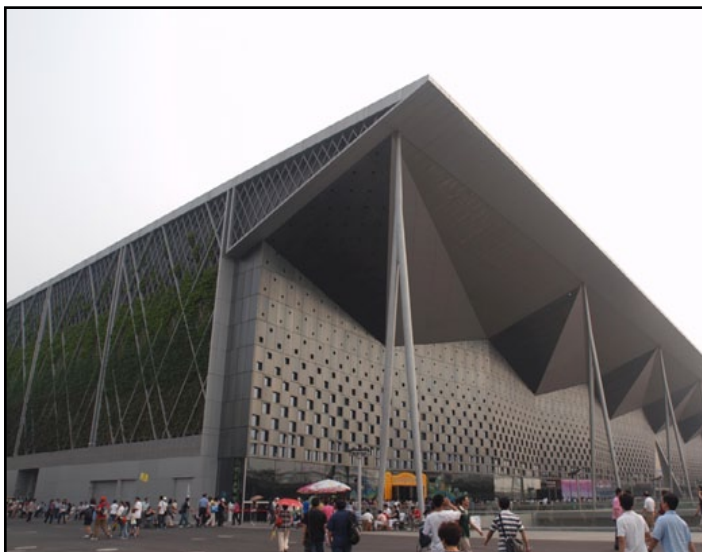
FEVE Coating

- Superior Durability
- Weather Resistance, UV stability and chemical resistance compared to POLYESTER Paint.
- 2 coats of paint applied during production with Polyurethane as the base and Fluoropolymer on top
- Available in Gloss Finish
- With 10 year Warranty

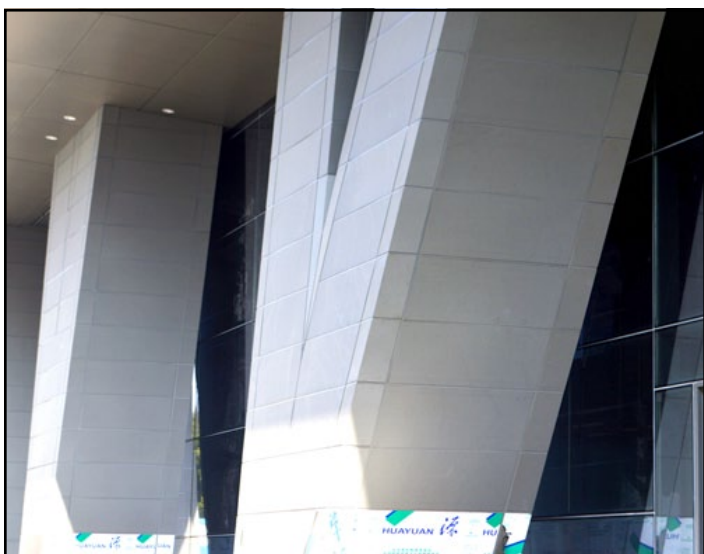
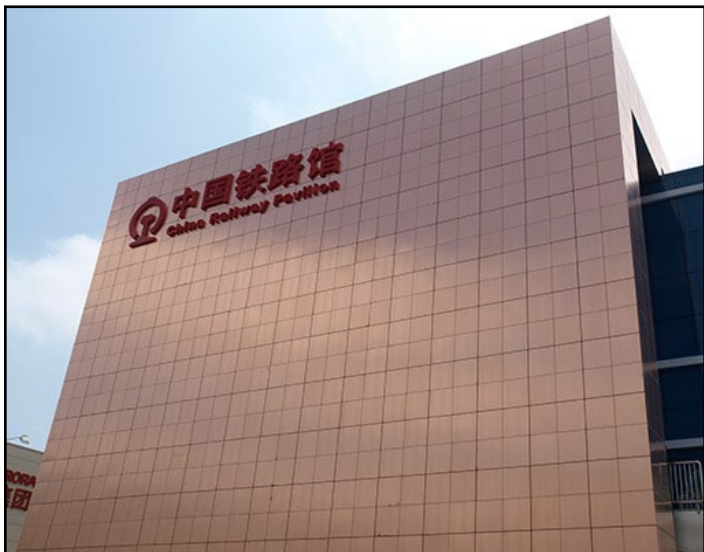
Aluminum Composite Cladding



Metal Composite Cladding



Metal Composite Cladding



International Projects



Backaldrin Technology Center, Austria



Bespoke Seminole Hard Rock Hotel, Florida



Central Embassy Bangkok, Thailand



Clarion Hotel Arlanda Airport, Sweden

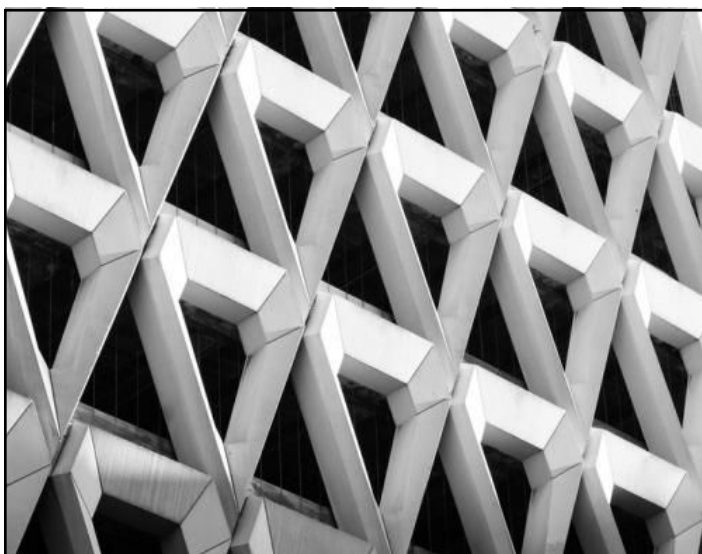
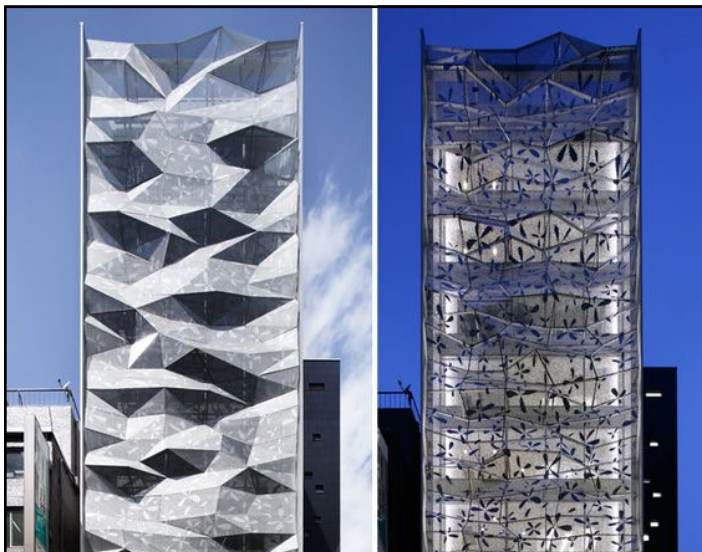


Concenta Linz, Austria



Sunway Velocity Mall, Kuala Lumpur, Malaysia

Applications of Metal Composite Materials in PINTEREST.COM



Applications of Metal Composite Materials in PINTEREST.COM

